

**ERYTHEMATOSQUAMOUS
DISORDERS**



PSORIASIS

Psoriasis

* Definition:

Psoriasis is a common, chronic, recurrent inflammatory disease of the skin characterized by circumscribed, round, erythematous, scaly patches of variable sizes, covered by *silvery white scales*

* **Epidemiology:**

- Affects about 1 – 2 % of the general population
- Common in cold countries
- Both sexes are equally affected
- Affects all ages

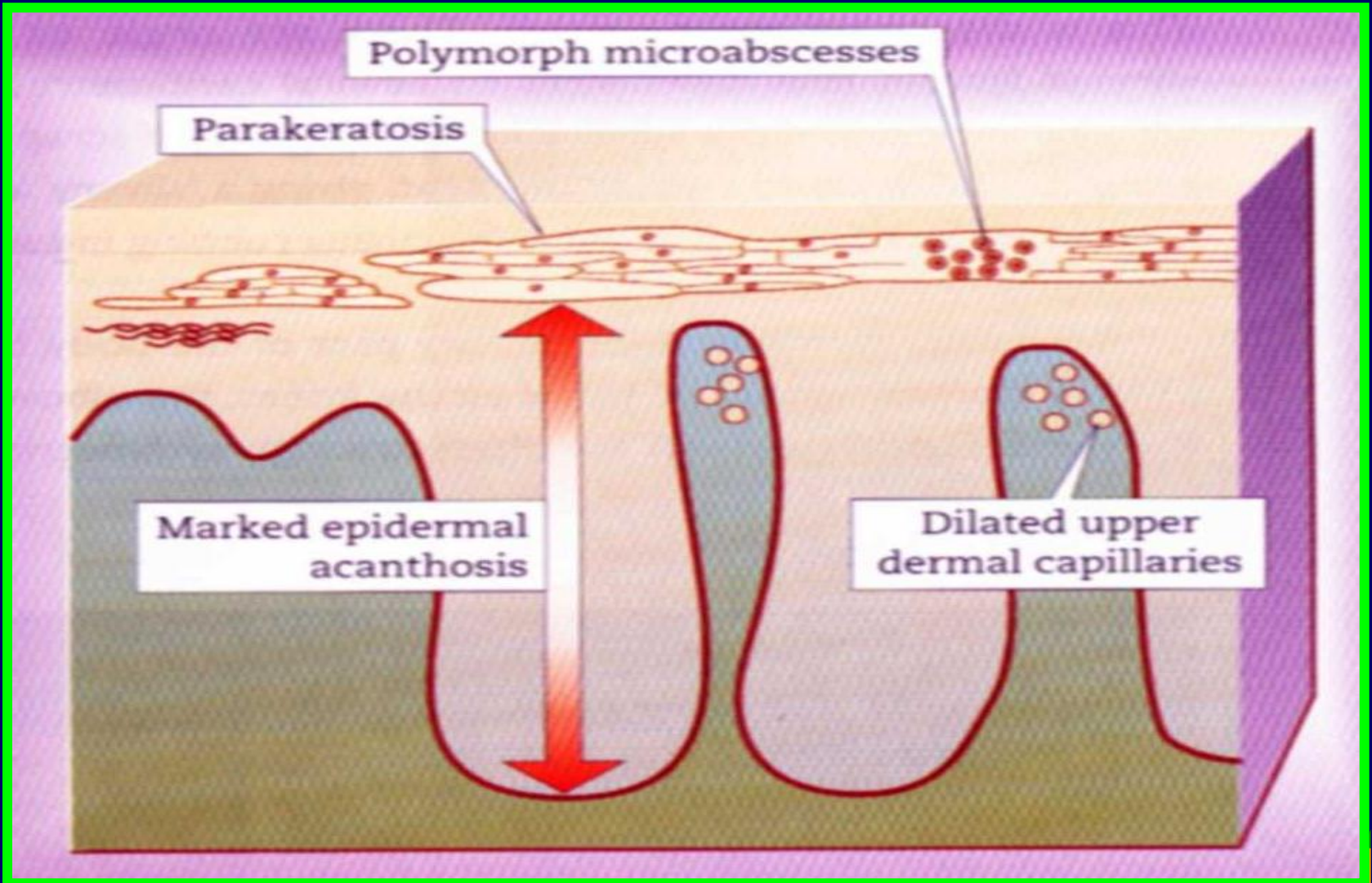
* **Pathogenesis of Psoriasis:**

Rapid proliferation of epidermal keratinocytes with not enough time for maturation resulting in *parakeratosis* and scale formation

* **Etiology:**

- Genetic predisposition
- Immunological abnormalities
- Infections
- Trauma

* Histopathology:



* **Clinical features of ordinary psoriasis :**

- Circumscribed, round, erythematous, scaly patches of variable sizes, covered by *silvery white scales*
- Vary from a solitary lesion to more than 100
- Affects extensors
- Bilateral and symmetrical
- The course is chronic and unpredictable

Clinical varieties of Psoriasis

- Psoriasis vulgaris
- Guttate psoriasis
- Discoid psoriasis
- Annular psoriasis
- Flexural psoriasis
- Psoriasis of the nails
- Psoriasis of the scalp
- Pustular psoriasis
- Erythrodermic psoriasis
- Arthropathic psoriasis

Treatment of Psoriasis

A) Topical therapy:

- Corticosteroids
- Tar preparations
- Salicylic acid ointment 3% – 5%
- Vitamin D₃ analogue (Calcipotriol)
- UVB

B) Systemic therapy:

Indicated for *erythrodermic, pustular or arthropathic psoriasis*

- Corticosteroids
- PUVA therapy
- Methotrexate
- Cyclosporine A
- Retinoids